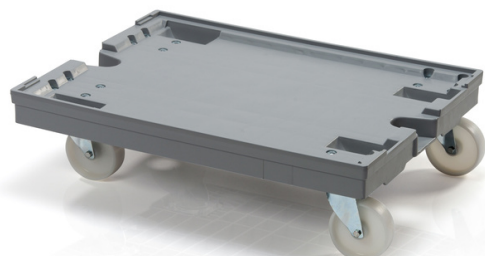


Transport trolley 80x60 2 steering + 2 fixed PP wheels



Transport trolley make handling of crates easy. The size is intended for crates of dimensions 80 x 60, it is also suitable for dimensions 40x30 - 2 rows. Polyamide wheels with 2 steering wheels, 2 fixed wheels. The fork can be made of stainless steel, whichever the customer chooses. It is very balanced, made of quality ABS.

Product code: 980500

Number of pieces on the pallet: 24



Technical specification

Features:

Colour	grey
Material	PP
Weight	9.97 kg
Dynamic load capacity	400 kg

Dimensions

Length	80 cm
Width	60 cm
Height	20 cm

Specification

2 swivel and 2 fixed 100 mm wheels

The provided values are approximate and are based on practical experience and the ISO 8611 standard. These values were obtained under uniform load conditions at room temperature (20 °C). Due to different usage conditions, variations in values may be observed. We recommend conducting product testing before deployment.

All technical data of the products, including dimensions and weights, are subject to changes resulting from testing conditions and production technology. No legally binding guarantees of specific properties can be inferred from the information obtained.

We reserve all rights, including the right to unforeseen errors and changes. We emphasize that the provided technical data is for informational purposes only and may be subject to changes without prior notice.