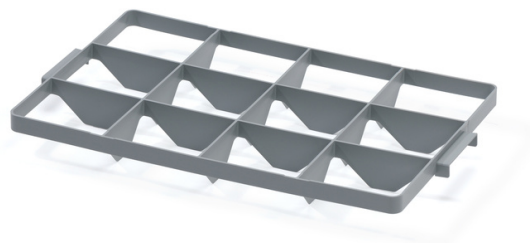


## Crate insert 12 - top



The crate inserts are designed so that the bottom loosely sticks to the surface, while the inserts for the top are fitted into the handles by 2 bars at the front sides. Suitable for washing, transport and storage of glasses. Safe glasses storage due to a balanced division into compartments.

**Product code:** 965925

**Number of pieces on the pallet:** 256



## Technical specification

### Features:

Colour	grey
Material	PP
Weight	0.32 kg


### Dimensions

Length	60 cm
Widht	40 cm
Height	2 cm

### Specification

12 holes 13.7 x 11.7 cm

 [info@tbplast.cz](mailto:info@tbplast.cz)

 + 420 565 534 000