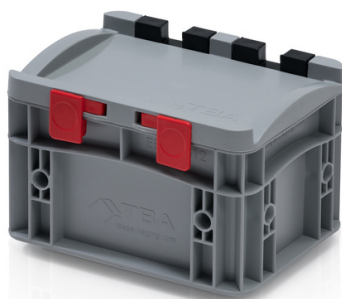


EURO crate 20x15x12 with lid



The Euro crate is a universal workhorse in all branches of industry. It is hygienic and easily stackable for use in transport and storage. Cold, contact heat, acid and lye resistant. Plastic boxes made of top quality polypropylene. Optimized for usage in automatized logistics (suitable for use on moving and roller conveyors). Supports imprinting, open and closed holds.

Product code: 966983

Number of pieces on the pallet: 640



Technical specification

Features:

Colour	grey
Material	PP
Handels	closed
Volume	2 l
Weight	0.44 kg

Due to the use of various raw materials, it is not possible to prevent fluctuations in color shades. All technical parameters of the products, including their dimensions and weights, are subject to changes resulting from testing conditions and manufacturing technology. No legally binding guarantees of specific properties can be inferred from the information obtained.

We reserve all rights, including the possibility of unforeseen errors and subsequent adjustments. We emphasize that the provided technical data is for informational purposes only and may be subject to changes without prior notice.

Dimensions

Length	20 cm
Widht	15 cm
Height	13.5 cm

Internal dimensions

Internal dimension length	17 cm
Internal dimension width	12 cm
Internal dimension height	11.5 cm